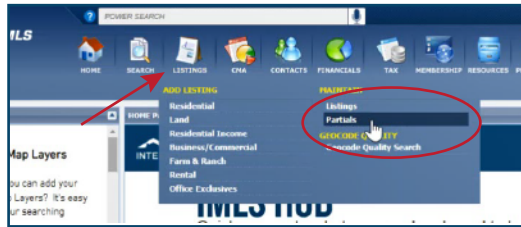
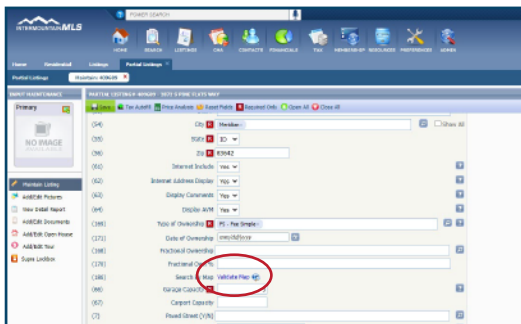


ADD MAP INPUT TO A LISTING

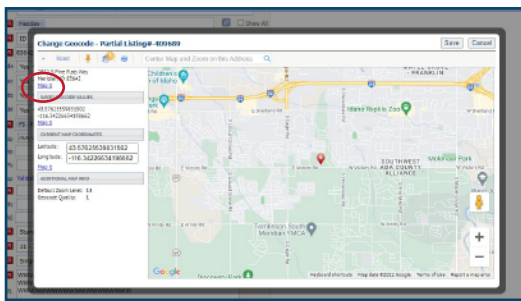
1. Go to listings, click Maintain - Partial



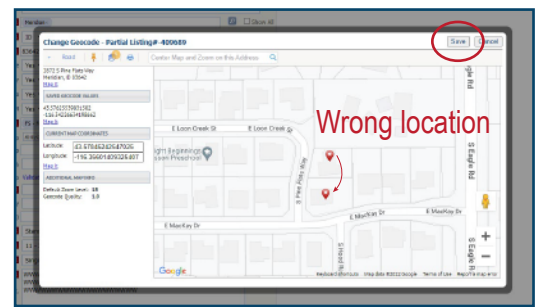
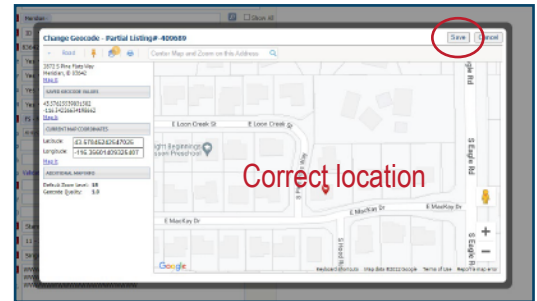
2. Click on Validate Map (186)



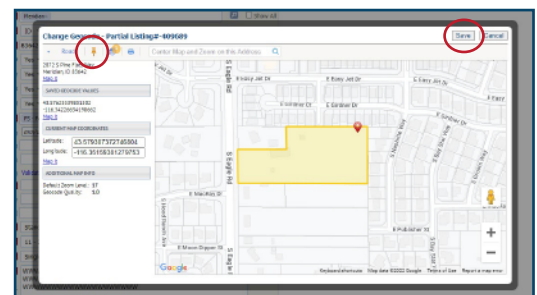
3. This will bring up the Change Geocode window. Click Map it. Zoom in to make sure it is on the property.



4. If the pin is in the correct location, click Save. If the pin is not correct, move it to the property. Click Save.



5. If the property is in a new development and the map is not showing the correct location -
 - move the map where the pin needs to be
 - click on the pushpin icon
 - click on the map where the property is located
 - click Save



Please visit www.imlsmembers.com/how-to-videos to watch a step-by-step video